






**2 week Junior Aviation English Course – Including option of ELP style test at end
Course Date: 5th –18th September 2011**



Contact person/title	Danielle Wall – Marketing Co-ordinator/ Edgewater College
Contact details	Tel: 00353 - 41 – 9846500 Email: danielle@edgewater.ie Website: www.edgewater.ie
Address	Merchant House, 9/10 Merchant’s Quay, Drogheda, Co Louth, Ireland
College Overview	<p>Located in the medieval town of Drogheda, in County Louth, Ireland just 20 minutes north of Dublin Airport, we are in an ideal location for students to learn English and explore the beautiful country known as the "Emerald Isle".</p> <p>Edgewater College gives students more options regarding their choice of education. The success of the college has been based on the quality of the courses and the professionalism of the tutors who deliver them.</p> <p>Our client base varies from business executives to groups of young students following general and specialised English language programmes, pre-university and third-level courses.</p> <p>Edgewater College has almost 20 years experience in providing high quality English language courses to non-native speakers of English, particularly ESP (English for Specific Purposes). We are widely known and highly regarded internationally for the commitment and expertise of our bespoke language programmes.</p>
Location Overview	<p>Located in one of Ireland's oldest and most historical towns, the town of Drogheda is situated only 28 miles (45K) from Dublin. It is very accessible from Dublin and Belfast, Air and Seaports.</p> <p>A busy, bustling town with a delightful mix of old and new buildings, wide streets and narrow lane-ways. A shopper’s paradise with modern indoor shopping facilities ensure students can browse in the most unpredictable of Irish weather.</p> <p>Students are invited to explore our wonderful town, and witness first-hand just how much the town of Drogheda and its friendly people have to offer.</p>

<p>College Accreditations</p>	<p>Irish Department of Education & Science: Edgewater College is approved by ACELS (Advisory Council of English Language Schools who work under the auspices of the Department of Education) as a quality English language training provider.</p> <p>ILM: Edgewater College is accredited by ILM to carry out a number of business courses. The Institute of Leadership and Management (ILM) is dedicated to advancing the capability of managers and leaders worldwide through the provision of expert qualifications,</p> <p>MEI Relsa: Edgewater College is a member of MEI RELSA. MEI~RELSA is an association of 66 high quality English Language Schools, operating language courses in over 120 locations around Ireland.</p> <p>TOEIC: Edgewater College is an approved test centre for the TOEIC test. The TOEIC test (Test of English for International Communication) measures the ability of non-native English-speaking people to use English in everyday work activities.</p> <p>CAAC: Edgewater College are approved by the CAAC (Civil Aviation Administration of China) for the teaching of Aviation English in China. The Civil Aviation Administration of China (CAAC), formerly General Administration of Civil Aviation of China, is the aviation authority under the State Council of the People's Republic of China. It oversees civil aviation in mainland China.</p> <p>UAE Ministry of Education: Edgewater Training Institute in Abu Dhabi UAE is approved by the Ministry of Education.</p> <p>GCAA: The Aviation language courses are approved by GCAA through our UAE partners ACTi.</p> <p>FSFI: Edgewater College is a member of the Flight Safety Foundation International (FSFI).</p> <p>Marco Polo: Edgewater college is a founding partner of the Marco Polo Sino European Training Solutions.</p> <p>College Ireland: Edgewater College in association with the Irish Aviation Authority is a founding partner of College Ireland</p>
<p>Quote Overview</p>	<ul style="list-style-type: none"> • A 2 week junior Aviation English programme held at Edgewater College, Drogheda, Co Louth, Ireland • Programme includes testing on arrival, return airport transfers to Dublin airport, full board host family accommodation, daily classes, option of ELP style test at end of course, activities and excursions. • Students will be awarded an Edgewater College certificate on completion.
<p>Pre course</p>	<p>On the first morning, students will have a welcome/induction presentation, they will then get a welcome pack including a note-pad, a pen, a map, time-table and host family details.</p> <p>Students will then sit a placement test to assess their level. This will include a listening, grammar and writing section.</p> <p>While waiting for their tests to be corrected, students will have an “Introduction to Ireland” session giving them information on our wonderful country and culture through linguistic games and fun.</p> <p>Students will then be assigned their class. There will be a maximum of 15 students per class. A minimum of 6 students per level is required.</p>

<p>About the course</p>	<p>A combination of General and Aviation English, this programme promises to improve the communicative competence of each individual.</p> <p>Suitable for a broad range of aviation professionals - including aspiring pilots, air traffic controllers, engineers etc.</p> <p>Participants will experience living with a traditional Irish host family to further enhance their language learning experience</p> <p>Small classes (maximum 15 per class) ensure personal attention for each student, and each course is relevant to the professional area of the student in response to the specific and special needs of the individual.</p>
<p>About the test OPTIONAL</p>	<p>At the end of the course, each student has the option to sit an ELP style test. This test – unique to Edgewater College meets ICAO, EASA and JAA requirements and is approved by the IAA (Irish Aviation Authority).</p>  <p>Each test will last approx 20 minutes and will involve the student being assessed by 2 of our Aviation Language experts. Below is a very brief summary of the test.</p> <p>The test will provide the students with sufficient and varied opportunities to use plain language in an aviation work related context in order to demonstrate their ability with respect to each descriptor in the Language Proficiency Rating Scale and the Holistic Descriptors as defined by ICAO, and cross referenced with Common European Framework of Reference for Languages; Learning, Teaching, Assessment (CEFR) to provide a consistent, reliable assessment of the test takers language level. To achieve this, the test has been developed by a team of linguistic and operational subject matter experts to ensure validity, reliability and operational relevance.</p> <p>To effectively test both ICAO phraseology and plain English, the test is divided into 3 areas:</p> <ol style="list-style-type: none"> 1) Greeting and Test Taker Background -This is a warm-up or ice-breaker which elicits plain language responses from the test taker) 2) Non-visual radiotelephony interaction information exchange Part 1 uses recorded radiotelephony messages and interlocutor acting as an ATC or flight crew member to elicit ICAO phraseology responses. Part 2 uses recorded radiotelephony messages and interlocutor acting as an ATC or flight crew member to elicit Non-Normal/Emergency radiotelephony and plain English responses. 3) Plain English expansion Part 1 requires the test taker to examine a photograph/picture in an aviation context for and then describe it to the interlocutor using plain English. Part 2 requires an extension of plain English by the test taker into his/her beliefs/opinions etc on the picture. The discussion remains focused on topical areas of Aviation English. A result certificate will be issued at the end, correlating the test takers level with ICAO levels, however it will not be an official ICAO/ELP certificate.

<p>Class Times</p>	<p>A typical learning and teaching day may be divided as follows:</p> <ul style="list-style-type: none"> • 09.00 – 09.50 – General English in mixed classes • 10.00 – 10.50 – General English in mixed classes • 11.00 – 13.00 – Aviation English (Closed Group) • 13.00 - 14.00 – LUNCH • 14.00 - 15.00 - Aviation English (Closed Group) • 15.10 – 16.10 - Aviation English (Closed Group) <p>Classes are held in the Edgewater college building from Monday – Friday</p> <div style="display: flex; justify-content: space-around;">   </div>
<p>Teachers</p>	<p>The faculty is a combination of experienced language teachers and aviation professionals. Some of them are pilots with many hours of commercial short and long haul flying experience whom are also qualified EFL teachers. Others are qualified teachers with flying experience. All of our native English-speaking teachers are university post-graduates, holding Masters Degrees in Linguistics, Language and ESL. Our team have lived and worked in a wide variety of cultural, educational and linguistic contexts.</p>
<p>Airport Transfers</p>	<p>We work very closely with a reliable, efficient transport company in our area. We can arrange for the student to be welcomed and collected at Dublin airport and dropped safely to their accommodation. We will also arrange collection from their accommodation to Dublin airport for their return journey.</p>
<p>Accommodation</p>	<p>Edgewater College has a wide selection of carefully selected families that are regularly inspected to ensure the highest standards are met.</p> <p>All of our host families are friendly and interested in the students they host. Our accommodation officer visits each to ensure that the highest possible standards are maintained.</p> <p>Host Family accommodation is the classic option and students are welcomed into the family just like a family member.</p> <p>For your students, we can arrange host family accommodation within 30 minutes walking distance of the college, if the distance is further, transport will be provided.</p> <p>Students will be provided with breakfast, a packed lunch and evening meals for the duration of their stay.</p> <p>If for any reason the student is unhappy in their host family, we will arrange alternative accommodation within 48 hours.</p>

Activity/Excursion Programme

This course will include 2 full and half day trips, transport and entrance fees included:

A field-trip to AeroEngines - an aeroplane Engine shop near Dublin airport.
A trip to Bru-Na-Boinne Interpretive centre – including Newgrange.

On the first Saturday, students will enjoy a trip to Dublin City, including a guided walking tour of the city and some free time to explore before returning back to Drogheda.



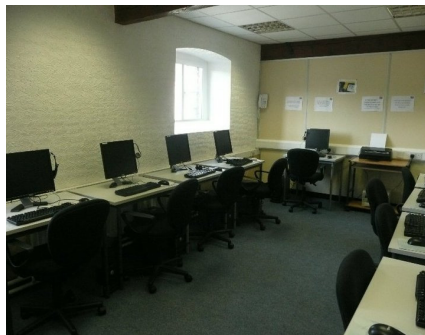
Edgewater College Facilities

Students will have access to all Edgewater College facilities including:

Library: A self-access library is stocked with graded language materials for students who wish to carry out further studies outside of normal class hours. Teaching staff are available to assist students with their extra study sessions.

Computer Lab: Students have use of our computer lab with free internet access. Edgewater College also operates a WIFI system, so students can enjoy Internet access throughout the building with the use of a laptop.

Student Area: Participants will have access to the student area which has a kitchen with tea/coffee making facilities, a water cooler, vending machine for snacks etc. There is also a lounge area with a flat screen TV, sofas, magazines and newspapers. Participants can also find information on local bus/train time-tables and local sites of interest and events.



Quotation

Summary of what's included:

- 20 x 50 minute General English Language sessions
- 40 x 60 minute Aviation English sessions
- Classes Monday—Friday (09.00—16.10)
- Placement test on arrival
- Welcome Induction/Presentation
- Welcome Pack (incl: pen & notepad)
- Intro to Irish Culture session
- Different levels available (min of 6 students required per level)
- Max.15 students per class
- ELP style test at end
- 2 half day excursions
- 1 full day excursion to Dublin City
- Return airport transfers (Dublin Airport)
- Full board host family accommodation
- Certificate on completion

For more information on prices etc
please contact:

danielle@edgewater.ie